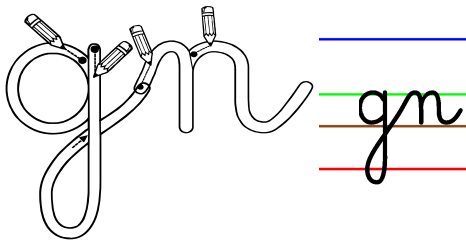




gn = gn

Les lettres g et n

ReCreatisse.com



Four horizontal lines for handwriting practice: a top blue line, a middle green line, a baseline brown line, and a bottom red line. The cursive letters 'gn' are positioned between the green and brown lines.

This work is licensed under a [Creative Commons Attribution-NonCommercial-ShareAlike 4.0 International License](https://creativecommons.org/licenses/by-nc-sa/4.0/)

ReCreatisse.com

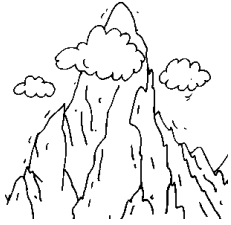
	a	al	ar	o	ol	é	e	eu
gn								

ReCreatisse.com

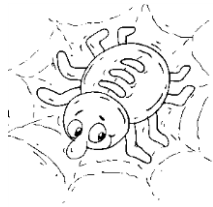
	a	al	ar	o	ol	é	e	eu
gn								

ReCreatisse.com

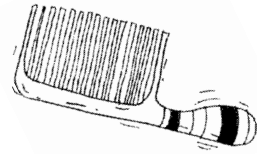
Complète avec : gne – gnée



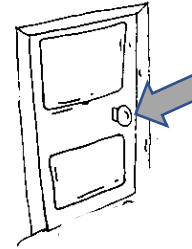
monta.....



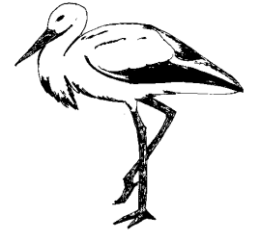
arai.....



pei.....



poi.....



cigo.....

Dans chaque colonne barre le mot qui ne contient pas gn :

chignon

vigne

il souligne

pigeon

oignon

piscine

il gagne

châtaigne

camion

signe

il se baigne

rossignol

champignon

ligne

il termine

campagne

gne - gna - gné - gnar - gneu - gnal - gnol

la ligne - aligné - la vigne - le vignoble -

La vigne forme des jolies lignes.

gna

gnal

gnar

gno

gnol

gne

gneu

gna

gnal

gnar

gno

gnol

gne

gneu